

# 2025 Study Abroad Student Guide



Creative  
thinkers  
made here.

# Contents

Welcome to Edith Cowan University	3
Study Abroad at ECU	4
Who is ECU?	5
Why study at ECU?	5
Important Dates in 2025	6
About Study Abroad	7
Life as a student	8
Things to do around Perth and WA	10
<b>Our study areas</b>	<b>12</b>
<b>Undergraduate options</b>	<b>14</b>
Art & Humanities units	14
Business & Law units	15
Engineering units	16
Indigenous Australian units	16
Medical & Health Sciences units	17
Nursing & Midwifery units	18
Science units	18
Teacher Education units	19
WAAPA units	20
<b>Postgraduate Options</b>	<b>21</b>
Art & Humanities units	21
Business & Law units	21
Engineering units	21
Medical & Health Sciences units	21
Nursing & Midwifery units	22
Science units	22
Teacher Education units	22
How to apply	23
Where will you study?	24
Student accommodation	25
Frequently asked questions	27

Every effort has been made to ensure that the information in this publication is correct at the time of production. The information is subject to change from time to time and the University requests the right to add, vary or discontinue courses and impose limitations on enrolment in any course. The publication constitutes an expression of interest and is not to be taken as a firm offer or understanding.

# Welcome to Edith Cowan University

**Edith Cowan University (ECU) is one of Australia's youngest universities, named after one of Australia's most inspiring women.**

Edith Cowan OBE is an Australian icon.

She influenced the course of education in Australia, paving the way for many people to access education they could only previously dream of.

Edith was also an exceptional problem solver and creative thinker.

At ECU, we believe that human creativity, combined with the inspiration of learning, has the power to transform lives and to create a better world.

So as a student, we'll prepare you by teaching you the skills sought by industries and employers worldwide, such as creative thinking and problem-solving.

Here, we encourage you to have a positive mindset and to see problems as opportunities.

And if you study at ECU, you'll be joining a university that's an established Australian leader in the delivery of high-quality teaching.

You'll find your lecturers and many other staff here are invested in your success and make themselves available whenever you need their guidance.

It's why our graduates have rated us 5 stars in the Good Universities Guide for 17 straight years.

We're also one of Australia's best universities for student support and the overall experience of our students –including international students like you.

Here's one last thing we should tell you about us.

We're building a new campus right in the middle of our capital city, Perth.

It will be a university like no other in Australia, offering a unique student experience.

A high-tech hub for students in the creative industries, performing arts, business and law and much more.

You might even be one of its first students when the doors open in February 2026.



**Jake Garman**  
**Deputy Vice-Chancellor (International)**



At ECU, we recognise and respect the significance of Aboriginal and Torres Strait Islander peoples' communities, cultures and histories.

We also acknowledge and respect the Noongar people as the traditional custodians of the land on which our campuses are located.



Read more –  
[ecu.edu.au/about-ecu/indigenous-matters](https://ecu.edu.au/about-ecu/indigenous-matters)





## Study Abroad at ECU

A Study Abroad program is the perfect way to expand your global citizenship. Live, work, and study in Australia, immerse yourself in the culture, and develop a deeper understanding of how you can contribute to the world.

From the time you enquire to the time you enrol, our expert staff will guide you. We can help you select your units, submit an application, accept your place and explore what else ECU has to offer so you can make good use of your time abroad.

Students come from all over the world to study with ECU and each has their own unique experience.

You can also chat to some of our current International Student Ambassadors to hear their experience first hand.



Chat to a Student Ambassador –  
[ecu.edu.au/degrees/international/ask-a-student](https://ecu.edu.au/degrees/international/ask-a-student)



“At ECU you will make amazing friends, and be provided with opportunities to enhance your future that will leave you with meaningful memories.”

Riley Gullino (USA)  
 Studied International Business



“In this program, you get the same opportunities as other students to enjoy ECU and to engage in class activity. I believe this amazing experience will help my career.”

Mengdie (Edith) Guo (China)  
 Studied Accounting and Finance



## Who is ECU?

Edith Cowan University, or ECU, is the youngest of the five universities in Western Australia (WA). And like the youngest in any family, we're on a mission to be noticed!

We are rated one of the world's best young universities under 50 years old. And we've already set a standard for the quality of university teaching in Australia, being rated 5 stars in the Good Universities Guide for 17 straight years!

Speaking of high standards, you won't find better support services to help you navigate your studies and adjust to your new home than at ECU. We put our students first.

## Why study at ECU?



### Get career ready while you study

During your studies, we'll help you build your personal brand to prepare you for your future career.



### Learn with leaders

As a student, you'll benefit from the expertise and industry experience of our world-class researchers and teaching academics.



### Become a creative thinker

Problem solving and creative thinking skills are highly valued by employers around the world, and we'll help you make this your **superpower**.



### Join our international community

Make new friends with students who've come to Perth from over 100 countries around the world.



### Feel right at home on campus

Your uni experience is made even better at one of our safe and welcoming campuses, where you'll have loads of modern facilities and cool study spaces.



### Grow your professional network

You'll have opportunities to make new contacts and connections thanks to our many industry partners.



### Know you'll be supported

We have a great reputation for student support and will help you adjust to your new life here, whatever your study or personal challenges.



### Transferable qualifications

ECU degrees are internationally-recognised and many of our courses are professionally-accredited by national and international professional bodies and organisations.

# ECU is one of the best universities in Australia

ECU is now an established Australian leader in the delivery of quality teaching, student support services and the overall experience of our students – both domestic and international (Good Universities Guide).



## Highest quality teaching

We're one of Australia's best universities for teaching. For 17 straight years, our graduates have rated the quality of our teaching 5 stars in the Good Universities Guide.



## Legendary student support

Studying in another country can be challenging for many people. But at ECU, we help you overcome any academic or personal challenges through our many support services.

We're one of the best universities in Australia for student support – we even have a Student Success Team.



## Best overall experience

At ECU, we encourage you to enrich your life with student clubs, sports teams, volunteering opportunities and more. In fact, for the third year in a row, ECU graduates have rated us the top public university in Australia for their overall experience as an undergraduate (QILT SES 2022).



Read more about our reputation for quality education:  
[ecu.edu.au/about-ecu/welcome-to-ecu/5star-experience](https://ecu.edu.au/about-ecu/welcome-to-ecu/5star-experience)



World University Rankings  
2024 TOP 400



World University Rankings  
Young  
2024 TOP 100

## Important Dates in 2025

### Semester 1, 2025

<b>Orientation</b>	17 – 21 February
--------------------	------------------

<b>Semester Commences</b>	24 February
---------------------------	-------------

<b>Mid Semester Break</b>	21 – 25 April
---------------------------	---------------

<b>Study Week</b>	27 – 31 May
-------------------	-------------

<b>Review and Examination</b>	9 – 20 June
-------------------------------	-------------

### Semester 2, 2025

<b>Orientation</b>	21 – 25 July
--------------------	--------------

<b>Semester Commences</b>	28 July – 1 August
---------------------------	--------------------

<b>Mid Semester Break</b>	29 September – 3 October
---------------------------	--------------------------

<b>Study Week</b>	3 – 7 November
-------------------	----------------

<b>Review and Examination</b>	10 – 21 November
-------------------------------	------------------

## Orientation

Orientation happens one week before the start of each semester and it's a great way for new students to adjust to uni life.

You'll get to meet teaching staff and new students, find your way around campus and understand where to go for our many student support services.



For more details on our application dates, visit  
[ecu.edu.au/future-students/applying/important-dates](https://ecu.edu.au/future-students/applying/important-dates)



# What you should know about Study Abroad at ECU

Study Abroad is a fantastic learning abroad experience. We want to make sure you create the best program, so we've outlined three key things you should know.

1

## Study Abroad course codes

You can study for up to 2 semesters as a Study Abroad student. The courses are:

- X01 Study Abroad Undergraduate One Semester
- X17 Study Abroad Undergraduate Two Semesters
- X02 Study Abroad Postgraduate One Semester
- X18 Study Abroad Postgraduate Two Semesters

2

## Selecting your units

You can choose units from all of our eight Schools to create a unique study program of 3-4 units per semester.

Here is how to select your units:

- Head to pages 15-24 of this guide to check out some popular units
- Search an ECU degree for units that match your interest (e.g. Bachelor of Laws)
- Head to the ECU Handbook and search by keyword to find a unit  
**[www.ecu.edu.au/handbook](http://www.ecu.edu.au/handbook)**
- Chat to an ECU Authorised Agent **[www.ecu.edu.au/future-students/applying/find-an-authorised-agent](http://www.ecu.edu.au/future-students/applying/find-an-authorised-agent)** or email ECU Staff **[partnerships@ecu.edu.au](mailto:partnerships@ecu.edu.au)**
- Undergraduate and Postgraduate Study Abroad applicants require an Academic IELTS overall minimum band score of 6.0, with no individual band less than 6.0. Visit the English competency page for more information: **[ecu.edu.au/future-students/course-entry/english-competency](http://ecu.edu.au/future-students/course-entry/english-competency)**

3

## Tuition fees

In 2025, the Study Abroad tuition fees are split into Group A and Group B:

### FEE Group A

Includes hundreds of units from disciplines in arts, business, computing, design, economics, teacher education, humanities, law, mathematics, science (non lab-based), some medical and health sciences disciplines and social science:

- 45 Credit Points (3 x 15CP units)  
Study Abroad fee: \$5,895
- 60 Credit Points (4 x 15CP units)  
Study Abroad fee: \$7,860

### FEE Group B

Includes a special selection of units in the disciplines of engineering, nursing, medical and health sciences and science (lab-based):

- 45 Credit Points (3 x 15CP units)  
Study Abroad fee: \$8,775
- 60 Credit Points (4 x 15CP units)  
Study Abroad fee: \$11,700

### Use our fees calculator

There may sometimes be variations in pricing for different units given the level of study.

To make sure you have the pricing right, check the tuition fees using our Fees Calculator **[myfees.ecu.edu.au](http://myfees.ecu.edu.au)**.

1. Select 'International Onshore Student' and your preferred study level.
2. Select 'unit' in the drop down.
3. Under 'Summary of your selection', click 'Study level' and select 'Study Abroad'
4. Search for the units you would like to study using the name or unit code.



# Life as a student

It doesn't matter if you've just left high school or you haven't been a student for a few years, study at uni is a whole new world. The good news is, no matter what your study challenges, we're ready to help you succeed.

## Adjusting to study whatever your situation

At ECU, we'll support you through your studies whatever your personal circumstances. This includes if you have a medical condition or disability or have responsibilities for caring for a family member in a similar situation.

It might also include ensuring you can continue to observe any cultural or religious practices.

Our Access and Inclusion team will work with you to identify reasonable adjustments to your study and uni life. They'll also provide ongoing support to you through an individual Learning Access Plan.

## Adjusting to academic life

Learning at university can be a bit daunting to begin with, but we've got you covered whatever help you need.

That includes help with preparing assignments, help with researching or referencing, help with online study and loads more. You even get a peer mentor in your first semester!

## Career advice and job skills

You can get support and resources to help you plan your future career, as well as find work or volunteering experience while you're a student.

This includes career-based workshops, industry events, one-to-one career advice and more.

## Free counselling service

If you need to discuss any personal issues that may be affecting your ability to study, we have a free, professional and confidential psychological counselling service.

## Sports and gyms

Being physically active positively stimulates your student brain and helps you reduce the stress of assignment deadlines or exams.

So, it's a good thing that our campuses have terrific sports and gym facilities. You can also join group fitness classes, social sports teams or attend regular healthy activities like yoga classes.

## Student health services

The ECU campuses in Joondalup and Mount Lawley have student health centres with doctors (GPs), and nurses to assist you if you need them. The services are covered by Medicare or Overseas Student Health Funds so most visits are free or low cost.



For more information —

[ecu.edu.au/future-students/ecu-experience](https://ecu.edu.au/future-students/ecu-experience)







## ECU Student Guild

ECU Student Guild is run by students and provides academic, social and financial assistance.

The Guild organises regular social events on campus and supports the many and varied student clubs at ECU. Joining a club is a great way to meet new people and enhance your university experience.

They also run a second-hand bookshop with an excellent range of used textbooks. Best of all, Guild membership is free for all students.



For more information —  
[ecuguild.org.au](https://ecuguild.org.au)



## ECU's International Café

Being an international student is an exciting opportunity – you get to build new friendships and amazing international contacts. But it can also be a little overwhelming.

ECU invites international students to come along and share a coffee and afternoon tea, while learning about living and studying in Australia at International Café.

Each week, hear from international students who have been in your shoes. Discover tips for balancing study and life, and other fun information such as the best hidden spots around Perth.

You will also hear from different guest speakers each week about services and activities available to you.

This is a great opportunity to meet other new international students from across the globe and get to know some of your fellow students a little bit better. All over a coffee and bite to eat!





# Perth and Western Australia

## Things to do



### Movies

See a film at one of several open air cinemas, including one on ECU's Joondalup Campus!



### Festivals

Visit one of Perth's annual international arts festivals –Fringe World Festival and Perth Festival.



### Sightseeing

Visit bustling Elizabeth Quay, enjoy a guided walk in Kings Park and explore the extensive cycle tracks around the Swan River.



### Beaches

Explore the stunning beaches and best sunsets in Australia.



### Rottnest Island

Take a ferry across to Rottnest Island and take a quokka selfie.



### Margaret River

Get away to Margaret River in WA's South West to explore the world-renowned cuisine, wineries, breweries, surf and accommodation.





# Why study in Perth, Western Australia?

With a high standard of living, Perth is a vibrant, sophisticated and safe city that is regularly rated among the top cities in the world for liveability.

The mild Mediterranean climate, endless blue skies, fresh air and brilliant white beaches are hard to beat!



## Cost of living

Perth has been consistently rated as one of the top ten most liveable cities in the world for over 15 years (source: The Global Liveability Index 2021).

With lower accommodation costs, lower transportation costs, and lower overall living expenses than some of the other major cities in Australia (and worldwide), it's easy to see why Perth is such a popular destination for international students. (source: StudyPerth).



## Climate

Perth has a Mediterranean climate with hot, dry summers and mild, wet winters. It is the sunniest capital city in Australia with clear blue skies an incredible 70% of the year!

Our warm weather and clean air allow us to enjoy a year-round outdoor lifestyle as we make the most of our state's natural beauty.



## Convenience & transport

Transperth offers a comprehensive and expanding network of convenient bus, train and ferry services to enable you to access our campuses and also explore what Perth has to offer. A free 'CAT' bus operates between Joondalup train station and the ECU Joondalup campus.





# Our study areas

At ECU, we group similar fields of work into eight diverse study areas that align with our teaching schools. All of our courses are industry-relevant and internationally-recognised and most are professionally-accredited.

## Arts & Humanities

Arts and Humanities at ECU offers great opportunities to become a savvy, problem-solving, future-building advocate, thinker, and maker! Whether in creative humanities, or across a range of psychology, criminology and social science offerings, our courses provide excellent career opportunities in the caring and creative professions.



## Business & Law

Business and Law at ECU offers an exciting mix of courses and majors that combine the latest theory with practical experience, leading to a diverse choice of careers. Students can expect a practical experience and to learn essential employability skills to help them succeed in a variety of dynamic global business environments.

## Medical & Health Sciences

Medical and Health Sciences offers exciting and diverse areas of study and some of ECU's world-leading research teams. Courses include biomedical science, health science, exercise and sports science, occupational therapy, paramedical science, speech pathology, nutrition and dietetics, medical sonography and public health.

## Engineering & Technology

At ECU's School of Engineering you'll study in some of the best-equipped, industry-grade engineering labs in Australia, with the opportunity to work on real-world projects and develop strong contacts through industry engagements, events and internships. With an ECU engineering degree, you'll graduate able to work globally and capable of meeting the challenges of the future.



**"I adore how applicable my ECU assignments are to real life in the profession."**

**Anjali Muskan Dhanani Munoz**  
Marketing, Advertising  
& Public Relations student







## Teacher Education

ECU has been at the forefront of teacher education for over 100 years and has a strong reputation for the quality of its graduates. The experienced academic team are world leaders in tertiary teaching in the area of teacher education and strive to find better ways to prepare quality teachers.



## Nursing & Midwifery

ECU produces some of the highest quality nursing and midwifery graduates in Western Australia and is recognised as a top 150 nursing program worldwide. Students have access to state-of-the-art health and wellness facilities, practical placements with a range of health providers and WA's only nursing and midwifery dual degree program.

## Western Australian Academy of Performing Arts

The Western Australian Academy of Performing Arts (WAAPA) at ECU is one of the world's leading performing arts academies. WAAPA is recognised nationally and internationally for the quality of its graduates. It provides the most extensive range of performing arts training in Australia – both on stage and behind the scenes.

## Science

ECU offers a range of courses in the areas of science, biological and environmental sciences, data science, bioinformatics, computing and security. ECU's research and teaching are world-class, with practical degrees that can lead to a variety of careers in fields such as marine and freshwater biology, conservation and wildlife biology, environmental management, physics, chemistry, mathematics, cyber security and horticulture.



**“ECU hosts a diverse community of students and teachers from around the world, which enriched my learning experience and broadened my perspectives.”**

**Lifang Wei**  
Master of Cyber Security graduate

# Undergraduate Options

Here is a list of our most popular units. For a full list of unit options available to you, please visit [www.ecu.edu.au/handbook](http://www.ecu.edu.au/handbook).

Please note unit availability is subject to change.

Arts & Humanities		SEM 1	SEM 2	FEE GRP
<b>Art and Design</b>				
PHO1625	Camera Work and Lighting	ML	-	A
DES1615	Design Knowledge	-	ML	A
DES1605	Design Prototyping	-	ML	A
DES1620	Design Thinking	ML	-	A
VIS1810	Drawing	ML	-	A
PHO2605	Photography and Darkroom Practices	ML	-	A
PHO2610	Photography Reimagined	-	ML	A
DES2114	Strategic Visual Communication	-	ML	A
VIS2815	Time Based Art	-	ML	A
<b>Communication</b>				
CMM1605	Communication Campaign	ML	-	A
CMM2600	Digital Content Creation	ML	-	A
CMM1600	Foundations of Advertising	ML	-	A
CMM1615	Media Content Strategy	-	ML	A
CMM2610	Strategic Branding	-	ML	A
<b>Creative Writing, Journalism and Literature</b>				
WRT1600	Creative Writing	ML	-	A
JBM2600	Storytelling and Social Media Influence	-	ML	A
WRT2605	Writing Creative Non-Fiction	-	ML	A
WRT1610	Writing Short Stories	-	ML	A
<b>Counselling, Criminology and Psychology</b>				
PSY1210	Biopsychology, Sensation and Perception	-	JO	A
CRI1103	Criminology	JO	-	A
COU1101	Dynamic Models of Counselling	JO	-	A
PSY1101	Introduction to Psychology	JO	JO	A
CRI2115	Psychology and Criminal Justice	JO	-	A

Arts & Humanities		SEM 1	SEM 2	FEE GRP
<b>Counselling, Criminology and Psychology (cont.)</b>				
PSY1115	Psychology of Motivation and Emotion	JO	-	A
COU1102	Self Development 1	-	JO	A
CRI1107	The Criminal Justice Process	JO	-	A
CRI1104	The Psychology of Criminal Behaviour	-	JO	A
COU1201	Therapeutic Practice with Families and Couples	JO	-	A
<b>Screen Production</b>				
SPR1600	Introduction to Screen Practice	ML	-	A
SPR1605	Screen Evolution	ML	-	A
SPR2600	Screenwriting	ML	-	A
<b>Youth Work, Social Work, Social Sciences</b>				
SWK2112	Australia Politics and Policy	-	SW	A
SWK2114	Community Health and Well-Being	-	SW	A
CSV1103	Interpersonal and Helping Skills	JO	-	A
CSV1102	Introduction of Social Analysis	-	JO	A
YWK1101	Principals of Youth Work	-	JO	A
CSV1203	Working with Groups	JO	-	A
YWK1220	Youth Issues	JO	-	A

## Fee calculator

To calculate the cost of your preferred units for study abroad, use ECU's fee calculator.

1. Select 'International Onshore Student' and your preferred study level.
2. Select 'unit' in the drop down.
3. Under 'Summary of your selection', click 'Study level' and select 'Study Abroad'
4. Search for the units you would like to study using the name or unit code.

Visit: [myfees.ecu.edu.au](http://myfees.ecu.edu.au)

## Campus key

JO Available at the Joondalup Campus  
ML Available at the Mount Lawley Campus  
SW Available at ECU South West, Bunbury

\* This unit has a prerequisite and is subject to ECU approval.

Additional units, as well as detailed information on unit content, credit points and learning outcomes are published online in the ECU Handbook: [ecu.edu.au/handbook](http://ecu.edu.au/handbook)



## Business & Law

SEM 1 SEM 2 FEE GRP

Accounting and Finance				
SBL1200	Accounting and Finance Essentials	JO	JO	A
ACC3201	Accounting Information Systems*	JO	JO	A
ECF1120	Finance I	JO	JO	A
ACC2700	Financial Reporting Standards*	JO	SW JO	A
Business Identity and Sustainability				
SBL2100	Cultural Business Intelligence	JO	-	A
SBL1500	Ethics and Responsibility in Business	JO	JO	A
MAN2610	Managing for Sustainability	JO	JO	A
SBL1800	Work and Career	JO	JO	A
Hospitality				
HOS2110	Food and Beverage Management	JO	-	A
TSM3101	International Resort Management	JO	-	A
HOS2325	Managing the Service Experience	-	JO	A
HOS2220	Rooms Division Management	JO	-	A
International Business				
INB3600	Business in Asia	JO	-	A
INB3303	Global Trade	-	JO	A
INB2102	International Business	JO	-	A
Law and Legal Studies				
LAW3855	Human Rights Law	JO	-	A
LAW2106	Intellectual Property Law	-	JO	A
LAW1100	Introduction to Business Law	JO	JO	A
LAW2605	Security and Intelligence Governance	-	JO	A

### Work Integrated Learning (WIL)

If you choose to study WIL units in the School of Business and Law, you have the option to take part in a hands-on professional practice experience with industry or community partners. These WIL opportunities let you apply what you've learned in class to real-world situations, gain valuable work experience for your CV, and connect with professionals in your field. It's a great way to build the skills and knowledge you'll need to succeed in your career.

## Business & Law

SEM 1 SEM 2 FEE GRP

Law and Legal Studies (cont.)				
SPM3113	Sport and Leisure Law*	JO	-	A
LAW2108	Workplace Laws and Regulation	JO	-	A
Management and HRM				
MAN3313	Future of Work	-	JO	A
MAN2145	Human Resource Management	JO	JO	A
MAN3121	Leadership	JO	JO	A
MAN1100	Management	JO	JO	A
Marketing				
MKT2700	Applied Omnichannel Marketing	-	JO	A
MKT2608	Consumer Behaviour	JO	JO	A
MKT3820	Marketing Analytics	JO	JO	A
MKT2605	Promotional Marketing	JO	JO	A
MKT2805	Social Media Marketing	JO	JO	A
Project Management				
MAN3612	Project Management	JO	-	A
MAN2170	Starting up a Project	JO	JO	A
Global Sports Business and Event Management				
TSM3501	Event Operations Management	-	JO	A
TSM2202	Introduction to Event Management	JO	JO	A
SPM2510	Marketing in Global Sport Business	-	JO	A
SPM3655	Sport and Events Funding and Finance	JO	-	A
SPM1102	Sport and Recreation Leadership and Programming	JO	-	A
SPM2111	Sport Organisation Management	-	JO	A
Tourism				
HOS3100	Hospitality and Tourism Management	JO	-	A
TSM2111	Introduction to Hospitality and Tourism	JO	-	A
TSM3610	Sustainable Tourism Development	-	JO	A
TSM2650	Travel, Destination and Visitor Management	-	JO	A
Work Integrated Learning				
FBL3501	Business Practicum	-	-	A

\* This unit has a prerequisite and is subject to ECU approval.

Additional units, as well as detailed information on unit content, credit points and learning outcomes are published online in the ECU Handbook: [ecu.edu.au/handbook](http://ecu.edu.au/handbook)

## Campus key

JO Available at the Joondalup Campus  
ML Available at the Mount Lawley Campus  
SW Available at ECU South West, Bunbury

Engineering		SEM 1	SEM 2	FEE GRP
<b>Aviation</b>				
SCA1125	Fundamentals of Flight*	JO	–	B
SCA1117	Human Factors in Aviation*	–	JO	B
<b>Chemical Engineering</b>				
ENS3111	Chemical Thermodynamics*	–	JO	B
ENS5561	Minerals and Solids Processing*	JO	–	B
ENS3113	Reaction Engineering*	–	JO	B
<b>Civil, Civil and Environmental Engineering</b>				
ENS5112	Construction Site Management*	–	JO	A
ENS5252	Construction Technology*	JO	–	B
ENS5161	Environmental and Process Risk Management*	JO	–	B
ENM3218	Fluid Mechanics*	JO	–	B
ENS3190	Mechanics of Solids*	–	JO	B
ENS3242	Soil Mechanics and Foundation Engineering*	JO	–	B
ENS2260	Surveying and Site Measurement*	JO	–	A
ENS5214	Transportation Engineering*	JO	–	B
<b>Electrical</b>				
ENS2457	Analog Electronics*	–	JO	B
ENS2344	Computer Architecture*	–	JO	B
ENS5253	Control Systems*	JO	–	B
ENS3554	Data Communications and Computer Networks*	JO	–	A
ENS2456	Digital Electronics*	JO	–	B
ENS5251	Digital Signal Processing*	–	JO	B
ENS3551	Electrical Networks*	JO	–	B
ENM2104	Instrumentation and Measurement*	JO	–	B
ENS2257	Microprocessor Systems*	–	JO	B
ENS5360	Power Electronics*	JO	–	B
ENS3206	Power Systems 1*	–	JO	B
ENS5447	Propagation and Antennas*	JO	–	B
ENS5204	Real-time Embedded Systems*	–	JO	B

Engineering		SEM 1	SEM 2	FEE GRP
<b>Electrical (cont.)</b>				
ENS5562	Renewable Energy Conversions 1*	JO	–	B
ENS5442	Robotics 1*	JO	–	A
ENS3553	Signals and Systems*	–	JO	B
ENS5445	Sustainability and Renewable Energy*	–	JO	B
ENS3556	Wireless Communication*	–	JO	B
<b>Mechanical Engineering</b>				
ENS5191	Electrical Engineering Design*	–	JO	B
ENS3212	Electrical Machines and Transformers*	–	JO	B
ENS1115	Materials and Manufacturing 1*	JO	–	B
ENS3105	Mechanical Design and Development*	JO	–	B
ENS2170	Principles of Industrial Maintenance*	JO	–	B
ENS2160	Thermodynamics*	–	JO	B
<b>Petroleum Engineering</b>				
ENS5162	Drilling Engineering*	–	JO	B
ENS3125	Petroleum Geology*	–	JO	B
ENS2115	Process Engineering Fundamentals*	JO	–	B
ENS2270	Reservoir Petrophysics and Formation Evaluation*	JO	–	B
ENS3301	Reservoir Thermodynamics and Fluid Properties*	JO	–	B
ENS5564	Unconventional Oil and Gas Resources*	JO	–	B
<b>Motorsports</b>				
ENS5216	Advanced Thermofluids*	–	JO	B
ENM2209	Race Car Systems*	JO	–	B

## Indigenous Australian Studies

		SEM 1	SEM 2	FEE GRP
<b>Indigenous Studies</b>				
ACS4133	Aboriginal Communities*	JO	–	A
SCH1101	Cultural Studies*	JO	JO	A
IAS3110	Indigenous Australians, Cultural Competence and Speech Pathology*		JO	A
IAS3100	Indigenous Health*	–	JO	A

## Campus key

JO Available at the Joondalup Campus  
 ML Available at the Mount Lawley Campus  
 SW Available at ECU South West, Bunbury

\* This unit has a prerequisite and is subject to ECU approval.

Additional units, as well as detailed information on unit content, credit points and learning outcomes are published online in the ECU Handbook: [ecu.edu.au/handbook](http://ecu.edu.au/handbook)

## Medical & Health Sciences

SEM 1 SEM 2 FEE GRP

Exercise and Sports Science				
SPS1301	Anatomical and Physiological Basis of Human Movement	JO	-	B
SPS2209	Assessment of the Football Player	JO	JO	A
SPS1840	Biomechanics and Skill Acquisition	-	JO	A
SPS2750	Coaching Science 3	JO	-	A
SPS1109	Fundamentals of Football Coaching	JO	-	A
SPS3604	Human Movement – Participation and Inclusion	-	JO	A
SPS1525	Lifespan Growth and Development	SW JO	-	A
SPS3104	Performance Studies 7	JO	-	A
SPS3120	Psycho-social Aspects in Physical Activity and Chronic Disease	JO ML	JO	A
SPS2615	Sports Injury Prevention and Management	JO	-	A
Health Promotion, Nutrition and Addiction Studies				
ADS1151	Addiction Studies: Fundamental Concepts	JO	JO	A
HST3100	Child and Adolescent Health	JO	-	A
HST2120	Community Development in Health Promotion	SW JO	-	A
HST1109	Epidemiology	-	SW JO	A
NUT1111	Food and Nutrients	-	SW JO	A
NUT3231	Food Habits and Trends*	JO	-	A
HST1183	Health, Society and Sustainability	-	SW JO	A
HST2124	Health Communication	JO	-	A
HST2220	Health Promotion Planning and Administration	-	SW JO	A
NUT1121	Human Nutrition	SW JO	JO	A
HST1120	Introduction to Health Promotion	SW JO	-	A
NUT1112	Nutrition and Public Health	JO	SW	A

## Medical & Health Sciences

SEM 1 SEM 2 FEE GRP

Health Promotion, Nutrition and Addiction Studies (cont.)				
NUT2210	Nutrition in the Life Cycle*	JO	-	A
HST1111	Population Health	SW JO	JO	A
Medical and Biomedical				
MMS2103	Clinical Biochemistry	-	JO	B
HST2184	Communicable Disease Control	-	JO	A
MMS3101	Evolutionary Perspectives on Health and Disease	JO	-	B
SCH2143	Forensic Skills	-	JO	B
SCH1111	Fundamental Biomedical Techniques	JO	-	B
MMS3115	Histopathology and Applied Histotechniques*	-	JO	B
SCH1132	Human Evolution and Ecology	-	JO	B
SCH1133	Human Genetics	JO	-	B
SCH3239	Human Immunology	JO	JO	B
MMS2101	Introduction to Haematology	-	JO	B
MMS2200	Introduction to Histology and Histotechniques	JO	-	B
SPS1530	Lifespan Growth and Development	JO	-	B
MMS3112	Safety and Quality in Healthcare	JO	JO	B
Occupational Health and Safety				
HST2184	Communicable Disease Control	JO	-	A
OHS1120	Occupational and Environmental Health and Safety Science	JO	-	A
Paramedical Science				
PST1106	Emergency Mental Health Response	JO	JO	B
PST1201	Lifespan Development for Paramedics	JO	JO	A
PST3210	Prehospital Perspectives in Emergency Management	JO	JO	A
PST3106	Paediatrics Studies for Paramedics	JO	JO	A
SCH2204	Prehospital Policy, Ethics and Analytical Frameworks	JO	JO	A

## Campus key

JO Available at the Joondalup Campus

ML Available at the Mount Lawley Campus

SW Available at ECU South West, Bunbury

\* This unit has a prerequisite and is subject to ECU approval.

Additional units, as well as detailed information on unit content, credit points and learning outcomes are published online in the ECU Handbook: [ecu.edu.au/handbook](http://ecu.edu.au/handbook)



## Medical & Health Sciences

		SEM 1	SEM 2	FEE GRP
<b>Speech Pathology</b>				
SPE1102	Language Across the Lifespan	JO	JO	A
SPE1103	Language Models and Analytical Frameworks	–	JO	A

## Nursing & Midwifery

		SEM 1	SEM 2	FEE GRP
<b>Nursing</b>				
NUM1102	Communication Skills for Nurses and Midwives*	SW	JO	B
NUM2307	Mental Health and Wellbeing in Clinical Practice 1*	SW	JO	B

## Science

		SEM 1	SEM 2	FEE GRP
<b>Biology and Environmental Science</b>				
SCI2123	Astronomy	–	JO	B
SCI2118	Australian Biota	–	SW JO	B
SCI1182	Case Studies in Science	–	JO	B
SCI1185	Ecology	–	SW JO	B
SCI1187	Form and Function in Biology	SW JO	–	B
SCM2104	Geographical Information Systems	–	SW JO	B
GEO1150	Geography and Environment: People, Pattern, Process	JO	–	A
SCI1193	Introduction to Environmental Science	JO	–	B
SCI1001	Introduction to Sustainability	JO	–	A
SCI1183	Origins and Evolution of Life	–	SW JO	B
SCI1192	Physical Environments	–	SW JO	B
SCI1125	Professional Science Essentials	SW JO	JO	B
<b>Chemistry</b>				
SCC1123	Chemistry for the Life Sciences	SW JO	–	B
SCC1111	General Chemistry*	JO	–	B

## Science

		SEM 1	SEM 2	FEE GRP
<b>Mathematics and Physics</b>				
MAT1108	Foundations of Mathematics	–	JO	A
SCP1134	Foundations of Physics	–	JO	B
SCP1132	Introduction to Physics	JO	–	B
MAT1137	Introductory Applied Mathematics*	JO	JO	A
MAT1114	Introductory Statistics	SW	JO	A
MAT1250	Mathematics 1*	JO	JO	A
MAT1251	Mathematics 2*	–	JO	A
MAT1252	Mathematics for Computing	JO	JO	A
SCP1111	Physics of Motion*	JO	–	B
SCP1112	Waves and Electricity*	–	JO	B
<b>Security and Computing</b>				
CSG1105	Applied Communications	JO	JO	A
SCY2120	Applied Intelligence	–	JO	A
SCY1108	Building Management Systems	–	JO	A
CSI1101	Computer Security	JO	JO	A
SCY2112	Counterterrorism	–	JO	A
CSG2132	Enterprise Data	JO	–	A
CSI2102	Information Security	–	JO	A
SCY1117	Intelligence Foundations	JO	–	A
CSP2108	Introduction to Mobile Applications Development	–	JO	A
CSP1150	Programming Principles	JO	JO	A
CSP2101	Scripting Languages	JO	–	A
SCY2108	Security Control Systems	JO	–	A
SCY1118	Security Foundations	JO	–	A
SCY2109	Surveillance Systems	JO	–	A
CSI1241	Systems Analysis	JO	JO	A
CSG1207	Systems and Database Design	JO	JO	A
SCY2107	Threat Detection Systems	–	JO	A

## Campus key

JO Available at the Joondalup Campus  
 ML Available at the Mount Lawley Campus  
 SW Available at ECU South West, Bunbury

\* This unit has a prerequisite and is subject to ECU approval.

Additional units, as well as detailed information on unit content, credit points and learning outcomes are published online in the ECU Handbook: [ecu.edu.au/handbook](http://ecu.edu.au/handbook)

## Teacher Education

SEM 1 SEM 2 FEE GRP

### Early Childhood Education

ECS2260	Assessing and Evaluating Young Children's Learning*	-	SW JO ML	A
AED1240	Drama Arts in Early Childhood Education*	SW JO	-	A
ECM2260	Early Childhood Mathematics 1	SW JO	-	A
SCE2240	Early Childhood Science and Technology Education*	SW JO ML	-	A
HPE2260	Health and Physical Education for Young Children	-	JO ML	A
EPA6170	Leading Early Childhood Pedagogy and Practice (0-8 years)	-	ML	A
EPA6175	Leading Family and Community in the Early Years (0-8 years)	ML	-	A
ECS1250	Learning and Learners	SW JO	-	A
ECS1245	Play and Pedagogy*	-	SW JO	A
SSE3260	Social Science Education in Early Childhood*	JO ML	-	A
ECS1265	Young Children's Learning and Development	-	JO	A

### Primary Education

LIT4260	Children's Literature in the Classroom*	-	JO ML	A
LNG4300	Cross Curricula Practice in the Primary Languages Classroom	-	ML	A
LAN3240	English for Speakers of Other Languages or Dialects	-	SW JO ML	A
LAN2240	English in the Early Years of Primary School*	SW JO ML	-	A
MAE1250	Foundations of Primary Mathematics*	SW JO ML	-	A
HSS2240	Humanities and Social Science in Primary Schools 1*	SW JO ML	-	A
HSS2260	Humanities and Social Science in Primary Schools 2	-	SW JO ML	A
EDS3240	Including Children with Special Educational Needs*	SW JO ML	-	A

## Teacher Education

SEM 1 SEM 2 FEE GRP

### Primary Education (cont.)

EDU4271	Managing the Behaviour of Students with Special Educational Needs *	SW JO	ML	A
EDU2260	Positive Learning Environments*	-	SW JO ML	A
SCE1260	Science Education in Primary Schools 1	-	SW JO ML	A
CED4405	Teaching About Jesus in Catholic Schools	-	ML	A
CED4400	Teaching About Sacraments in Catholic Schools	ML	-	A
CED4410	Teaching About the Gospels in Catholic Schools	-	ML	A
LAN6350	Teaching English to Speakers of Diverse Languages	-	ML	A
SCE4270	Teaching Integrated Science in Junior Primary Years*	ML	-	A
LNG4200	Teaching Languages in the Primary Classroom Context	-	ML	A
LNG6260	Teaching Languages in the Primary School	-	ML	A
LNG4100	Teaching Languages to Young Learners	ML	-	A
LAN4131	Teaching Reading in the Primary Classroom*	JO	ML	A
LAN4132	Teaching Writing in the Primary School	-	ML	A

### Secondary Education

EDU2231	Creating Positive Learning Environments*	-	JO ML	A
DTE2110	Design and Technology Education 1	ML	-	A
MUE4105	Directing School Music Ensembles*	-	ML	A
EDU3104	Diversity in the Secondary Classroom	-	JO ML	A
HPE2112	Physical Activity, Body, Culture and Identity	-	JO ML	A
CSE3152	Teaching Introductory Computer Programming*	-	ML	A
DSE2210	Teaching Senior School Drama*	-	ML	A
HPE3101	Teaching Secondary Health Education	JO	-	A

## Campus key

JO Available at the Joondalup Campus

ML Available at the Mount Lawley Campus

SW Available at ECU South West, Bunbury

\* This unit has a prerequisite and is subject to ECU approval.

Additional units, as well as detailed information on unit content, credit points and learning outcomes are published online in the ECU Handbook: [ecu.edu.au/handbook](http://ecu.edu.au/handbook)

## Teacher Education

SEM 1 SEM 2 FEE GRP

### Secondary Education (cont.)

HSS2130	Teaching and Learning in Humanities and Social Sciences	ML	–	A
MSE2101	Teaching Lower Secondary Mathematics	JO	–	A

### Important

Teacher Education Study Abroad unit entry requirements differ from full degree courses. Students wanting to further their study in a full degree course must meet all course entry requirements including English language requirements at time of full degree entry.

## WAAPA

SEM 1 SEM 2 FEE GRP

### Dance

DAN3903	Contemporary 3*	ML	ML	A
DAN3902	Performance 3*	ML	ML	A
DAN3904	Related Physical Disciplines 3*	ML	ML	A
DAN3906	Special Topics*	ML	ML	A

### Drama, Theatre and Arts

ADM2600	Arts Organisations Management*	ML	–	A
PAM2016	Arts Management*	–	ML	A
BPA2110	Australian Theatre & Performance in Context*	–	ML	A
ADM1605	Creating the Arts in the Contemporary World*	ML	–	A
BPA3545	Creativity and Collaboration in the Performing Arts*	ML	ML	A
DAN2425	Cultural Perspectives 2*	–	ML	A
PAM2121	Playwriting Workshop 1*	ML	–	A
BPA2006	Site Specific, Participatory and Immersive Performance*	ML	–	A
PAM3104	Stage Combat*	ML	ML	A
PAD3103	Theory and Practice of Contemporary Performance*	ML	ML	A
PAM2103	Theory of Directing*	ML	ML	A
BPA3205	Workplace Integrated Learning: Project Exegesis*	ML	ML	A

## WAAPA

SEM 1 SEM 2 FEE GRP

### Drama, Theatre and Arts (cont.)

BPA3115	Workplace Integrated Learning: Written Project Proposal*	ML	ML	A
---------	--	----	----	---

### Music

MUS2526	Classic Ensemble 3*	ML	–	A
MUS1563	Classic Musicianship 1*	ML	–	A
MUS1341	Ensemble Studies 1*	ML	–	A
MUS1342	Ensemble Studies 2*	–	ML	A
MUS1381	Jazz and Contemporary Musicianship 1*	ML	–	A
MUS1390	Music History: Chasin' the Trane-Modern Jazz Takes Hold*	–	ML	A
MUS2614	Music History: Electronic Music Overview*	–	ML	A
MUS4608	Music History: Film & Media*	ML	–	A
MUS1490	Music History: Stax, Motown and All Things Soul*	–	ML	A
MUS1140	Music of Our Time: The Australian Musical Landscape*	ML	–	A
MUS2619	Sound Recording*	ML	–	A



As WAAPA is one of Australia's most prestigious and comprehensive arts academies, entry into any unit is by audition and/or interview, in addition to standard ECU entry requirements.

## Campus key

JO Available at the Joondalup Campus

ML Available at the Mount Lawley Campus

SW Available at ECU South West, Bunbury

\* This unit has a prerequisite and is subject to ECU approval.

Additional units, as well as detailed information on unit content, credit points and learning outcomes are published online in the ECU Handbook: [ecu.edu.au/handbook](http://ecu.edu.au/handbook)



# Postgraduate Options

See below for a list of popular units or visit [www.ecu.edu.au/handbook](http://www.ecu.edu.au/handbook) for more options.

Please note unit availability is subject to change.

		SEM 1	SEM 2	FEE GRP
<b>Arts &amp; Humanities</b>				
CMM6500	Communication Techniques	ML	-	A
CMM6530	Creative Communication	-	ML	A
DES5102	Design Thinking	-	ML	A
DES5115	Design Technologies	ML	-	A
CMM6525	Ethical and Responsible Communication	-	ML	A
CMM6505	Strategic Communication	ML	-	A
DES5110	Visual Communication	ML	-	A
<b>Business &amp; Law</b>				
ACC6010	Accounting Concepts and Applications	JO	JO	A
MAN6307	Agile Projects	-	JO	A
MKT5325	Applied Digital Marketing	JO	JO	A
SBL6055	Big Data, Analytics and Business Decision Making	-	JO	A
FBL6530	Business Events Management	-	JO	A
MAN6777	Data Driven Managerial Decisions	JO	JO	A
ECF6115	Financial Markets and Institutions	JO	JO	A
HOS6504	Global Hospitality Operations Management	JO	JO	A
MAN6708	Managing Employment Relations	JO	JO	A
MAN5401	Managing Project Scope and Stakeholders	JO	JO	A
MKT6304	New Product Development	JO	JO	A
LAW6501	Principles of Contract and Corporate Law in Business	JO	JO	A
LAW6300	Principles of Taxation Law	JO	JO	A
<b>Work Integrated Learning</b>				
BUS6900	Management Practicum	-	-	A

		SEM 1	SEM 2	FEE GRP
<b>Engineering</b>				
ENS6144	Engineering Geology and Rock Mechanics	-	JO	B
ENS5543	Engineering Management*	-	JO	A
ENS5240	Industrial Control*	-	JO	B
ENS6146	Instrumentation and Measurement*	JO	-	B
ENS6138	Principles of Industrial Maintenance*	JO	-	B
<b>Medical &amp; Health Sciences</b>				
HST6355	Ageing, Health and Wellbeing	JO	JO	A
SCH6245	Clinical Bioinformatics	JO	-	B
HST6350	Drug Use and Addictive Behaviours	JO	JO	A
HSW5120	Epidemiology	JO	JO	A
NUT6110	Food Vision	JO	JO	A
HST6520	Health Science Career Transitions	JO	-	A
DER6101	Introduction to Emergency Management	JO	-	A
MMP6102	Medical Science Masters Project	-	JO	B
SCH6234	Molecular Biology and Genomics	-	JO	B
HST5161	Public Health: Philosophy, Principles and Practice	JO	JO ML	A

## Work Integrated Learning (WIL)

If you choose to study WIL units in the School of Business and Law, you have the option to take part in a hands-on professional practice experience with industry or community partners. These WIL opportunities let you apply what you've learned in class to real-world situations, gain valuable work experience for your CV, and connect with professionals in your field. It's a great way to build the skills and knowledge you'll need to succeed in your career.

## Campus key

- JO Available at the Joondalup Campus
- ML Available at the Mount Lawley Campus
- SW Available at ECU South West, Bunbury

\* This unit has a prerequisite and is subject to ECU approval.

Additional units, as well as detailed information on unit content, credit points and learning outcomes are published online in the ECU Handbook: [ecu.edu.au/handbook](http://ecu.edu.au/handbook)

		SEM 1	SEM 2	FEE GRP
<b>Nursing &amp; Midwifery</b>				
PSR5101	Managing Risk in the Clinical Environment*	JO	–	B
NUR6118	Nursing in the Context of Global Health*	–	JO	B
NUR6117	The Deteriorating Patient*	JO	JO	B
<b>Science</b>				
SCP5320	Advances in Physics 1	JO	JO	B
SCP5323	Advances in Physics 2	JO	JO	B
SCI6150	Biological Databases and Data Mining	–	JO	B
MAT5212	Biostatistics	JO	JO	A
CSI6230	Computer Networks and Security	–	JO	A
SCI6100	Environmental Monitoring and Investigation	JO	JO	B
SCI6105	Geographical Information Systems and Remote Sensing	JO	–	B
SCI6152	Mass Spectrometry in Systems Biology	–	JO	B
MAT6105	Mathematical Fundamentals	–	JO	A
CSI6201	Networking Technologies	JO	JO	A
CSI6208	Programming Principles	JO	JO	A
CSI6203	Scripting Languages	JO	JO	A

		SEM 1	SEM 2	FEE GRP
<b>Teacher Education</b>				
EDU6170	Assessment in Education: Policies, Pedagogy and Equity	–	ML	A
ECE6150	Contemporary and Comparative Perspectives in Early Childhood Education*	–	ML	A
AED6150	Dance, Drama and Media Arts Education in Early Childhood*	–	ML	A
EDU6373	Foundation Studies and Current Issues in Special Education	ML	–	A
ECE6145	Inclusive Early Childhood Environments	ML	–	A
ECE6140	Investigating Young Children's Holistic Learning and Development*	JO	–	A
EDU6120	Literacy and Numeracy in Teaching and Learning*	ML	–	A
EDU6160	Leading Education in a Global Context*	ML	–	A
MSC6110	Mathematics and Technologies for Young Children*	JO	–	A
SCE6120	Science for Young Children*	–	JO	A



## Campus key

JO Available at the Joondalup Campus  
 ML Available at the Mount Lawley Campus  
 SW Available at ECU South West, Bunbury

\* This unit has a prerequisite and is subject to ECU approval.

Additional units, as well as detailed information on unit content, credit points and learning outcomes are published online in the ECU Handbook: [ecu.edu.au/handbook](http://ecu.edu.au/handbook)

# How to apply: your study abroad journey

To be eligible for Study Abroad, you will need to meet English and Academic entry requirements.

## English undergraduate and postgraduate entry

Academic IELTS overall minimum band score of 6.0, with no individual band less than 6.0. Visit the English Competency page for equivalent tests [www.ecu.edu.au/future-students/course-entry/english-competency](http://www.ecu.edu.au/future-students/course-entry/english-competency).

You may satisfy English if you have completed 0.375 equivalent full-time study load (EFTSL) of your university degree in English and are from Austria, Belgium, Canada, Denmark, Finland, France, Germany, Iceland, Netherlands, Norway, Sweden or Switzerland.

The Study Abroad program can also be packaged with English through one of our pathway providers. Visit [www.ecu.edu.au/centres/international-office/our-services/agent-support/pathway-partners](http://www.ecu.edu.au/centres/international-office/our-services/agent-support/pathway-partners) for more information.

## Academic undergraduate entry (band 3)

Admission may be satisfied through the completion of secondary schooling, an Australian Qualifications Framework (AQF) qualification or successful completion of 0.25 EFTSL of study at bachelor level or higher at an Australian higher education provider (or equivalent).

## Academic postgraduate entry (band 6)

Admission may be satisfied through the completion of a bachelor (undergraduate) degree or higher.

Further information on academic admission can be found on the Course Entry page [www.ecu.edu.au/future-students/course-entry](http://www.ecu.edu.au/future-students/course-entry).





# Where will you study?

ECU currently has three campuses in Western Australia, located across Whadjuk and Wardandi land. Each has modern facilities, including wireless internet, 24-hour access to computer labs, libraries with open study spaces and a safe environment for you to study in – either alone or with other students.

## Joondalup Campus

The campus is only 25km north of Perth and a short walk or bus ride from the Joondalup Train Station and Lakeside Joondalup, one of the largest shopping centres in WA.

Joondalup Campus features award-winning architecture, cafés, a bar, an outdoor cinema, a lake and loads of trees and green spaces for study.

Here, you can study business, law, engineering, psychology, nursing, medical and health sciences, cybersecurity and other science-related courses and teacher education.



**25 mins** ECU Joondalup Campus  
from Perth city by train

## Mount Lawley Campus

Located in the thriving cultural hub of Mount Lawley and close to Perth's Central Business District (CBD), you can't help but be inspired by the artistic vibe at this campus.

Here, you'll find one of the world's leading performing arts academies, the Western Australian Academy of Performing Arts.

The campus is also home to students pursuing creative careers in Arts and Humanities, along with the next generation of aspiring teachers studying in our School of Education.



**15 mins** ECU Mount Lawley Campus  
from Perth city by bus

## ECU South West Campus

Located two hours' drive south of Perth, ECU South West in Bunbury is the largest university campus in regional Western Australia.

Here, you can expect small, personalised class sizes and courses in science, health sciences, nursing, social work and teacher education.

The campus features a café, mini-gym, crèche facilities, multi-purpose sports courts, and a library with 24-hour access to a computer lab.



**2 hours** ECU South West Campus  
from Perth city by car



Take a closer look at our campuses —  
[youtube.com/@edithcowanuniversity](https://youtube.com/@edithcowanuniversity)



# Student accommodation

There are a variety of accommodation options available to international students, including on-campus villages, off-campus private rental properties, and homestay with a Western Australian family.

## On-Campus Student Village

ECU Villages offer easy, convenient and affordable accommodation across all three campuses. Get an all inclusive concierge experience with the following facilities and inclusions:

- Rent
- Furniture
- 24/7 Support
- Utilities (water, gas, electricity)
- High speed Wi-Fi (unlimited)
- Laundry accessible 24/7
- Outdoor BBQ area
- On-site parking available (additional cost)
- Sound space (Mount Lawley)
- TV Room with Foxtel and gaming consoles (Mount Lawley & Joondalup)
- Swimming Pool (Mount Lawley & Joondalup)
- Basketball court (Mount Lawley & Joondalup)
- Pool table, foosball and table tennis (Mount Lawley & Joondalup)
- Recreation and lounge area

Due to the high demand for on-campus accommodation, we recommend that you make your online application early.



For more information visit —  
[campuslivingvillages.com/australia/perth/edith-cowan-university-village](https://campuslivingvillages.com/australia/perth/edith-cowan-university-village)

Students staying at an ECU Village can also experience special events including:

- Movie nights
- Community Dinners
- Gaming nights
- Craft Workshops
- Karaoke nights (Mount Lawley & Joondalup)
- Sport Competitions



ECU Village – Joondalup Campus

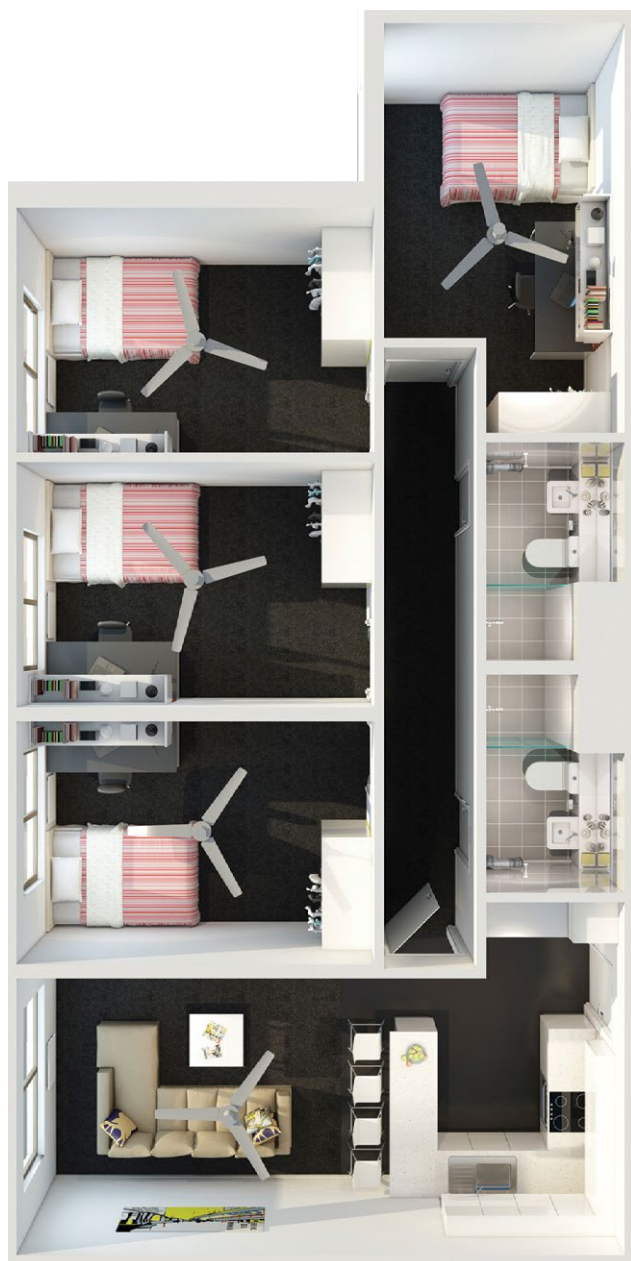


ECU Village – Mount Lawley Campus



ECU Village – ECU South West Campus





Apartment view

## Off-Campus Accommodation

Students may choose to rent an apartment, townhouse or house on their own or with fellow students. Private rental accommodation can be furnished or unfurnished.

For further information on off-campus options, please visit the **Accommodation Resources page** in the Student Support area.

→ Visit Accommodation Resources page — [intranet.ecu.edu.au/student/support/accommodation-resources](http://intranet.ecu.edu.au/student/support/accommodation-resources)

## Homestay

Students can also choose to live in a private home with an Australian family. The chance to be involved in daily life, the learning of our culture and customs, plus the added advantage of having the company of other people, are just some of the reasons Homestay is popular.

→ For more information — [homestaynetwork.org/edith-cowan-university](http://homestaynetwork.org/edith-cowan-university)

## Living Costs

Day-to-day living costs will vary, based on personal situations, interests and financial position. Students should plan a budget to suit their needs, but make sure it's flexible enough to allow for changes in circumstances.

→ Visit StudyPerth — [studyperth.com.au/living-in-perth/cost-of-living/](http://studyperth.com.au/living-in-perth/cost-of-living/)



→ Take a closer look at our campuses — [youtube.com/@edithcowanuniversity](https://youtube.com/@edithcowanuniversity)

# Frequently asked questions

## Why do I have to choose units before I apply?

We assess you for your units at the same time we assess you for your course entry. This saves you a lot of time, particularly when units have prerequisites.

## Can I choose units from across different ECU Schools?

You can. Lots of our students are keen to get a taste of different ECU Schools. This could include three or four Schools if you like.

## What do you mean by “unit”?

A unit refers to the different subject/courses/classes you enrol in. You would enrol in 3-4 units in one semester or 6-8 units in two semesters.

## What is a unit prerequisite?

A prerequisite is an entry requirement. You may have met standard English and academic entry for the Study Abroad program, but you will also have to meet entry requirements for certain units.

## Do I need to chat with my university back home about the units I choose?

Absolutely. They will be able to tell you if the ECU units you wish to study will count as credit towards your degree. Unfortunately, we cannot confirm this.

## Is there an application deadline for Study Abroad?

Please keep an eye on the Important Dates page, which lists the recommended application dates [www.ecu.edu.au/future-students/applying/important-dates](http://www.ecu.edu.au/future-students/applying/important-dates)

## Could the units I study during Study Abroad count as credit towards an ECU degree?

It is possible. It will all come down to how well the units you have studied in Study Abroad align with your chosen ECU degree. Check out Credit and Recognition of Prior Learning (CRPL) [www.ecu.edu.au/my-uni-start/get-started/applying-for-credit-and-recognition-of-prior-learning](http://www.ecu.edu.au/my-uni-start/get-started/applying-for-credit-and-recognition-of-prior-learning)

## Do I need health cover?

Yes, you need Overseas Student Health Cover (OSHC). It is compulsory if you plan to study on a Student Visa.

Medibank is ECU's preferred provider, but you can opt for any Government Registered Provider. Your offer letter will tell you more.

## Is there anywhere I can find information on what certain ECU systems OR acronyms mean?

We know it can be difficult getting used to study at a new university, including the names of the different systems and the study language. Please take a moment to look at our Uni-speak Glossary [www.ecu.edu.au/my-uni-start/glossary-uni-speak](http://www.ecu.edu.au/my-uni-start/glossary-uni-speak)

## What is My Uni Start?

My Uni Start is your one-stop place to accept your offer, activate your account, enrol in your units, book orientation and everything in between. Check out My Uni Start today [www.ecu.edu.au/my-uni-start/overview](http://www.ecu.edu.au/my-uni-start/overview)

## What kind of support is available once I become an ECU student?

The Student Hub is your place.

We have Hubs available on all three campuses, with each one dedicated to supporting our current students with matters relating to their studies.

## Got another question?

If you have any further questions, jump online to chat with one of our students [www.ecu.edu.au/degrees/international/ask-a-student](http://www.ecu.edu.au/degrees/international/ask-a-student)

